



سوهاج بلد المرواويل سوهاج برج الزغليل



A hidden gem, a place where highly skilled artisans are present.. lots of resources, opportunity and hope.

Sohag is set to be the largest furniture making anchor in Egypt.

With a pretentious look on the craftery, handmaking skills and innovation of a local artisans, we see this with bright open eyes.

Sohag is full of inspiration; from its natural essence to the beauty of its local's daily dwellings.



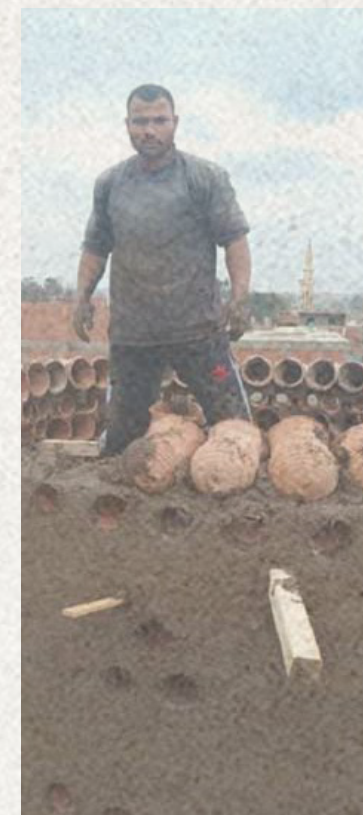
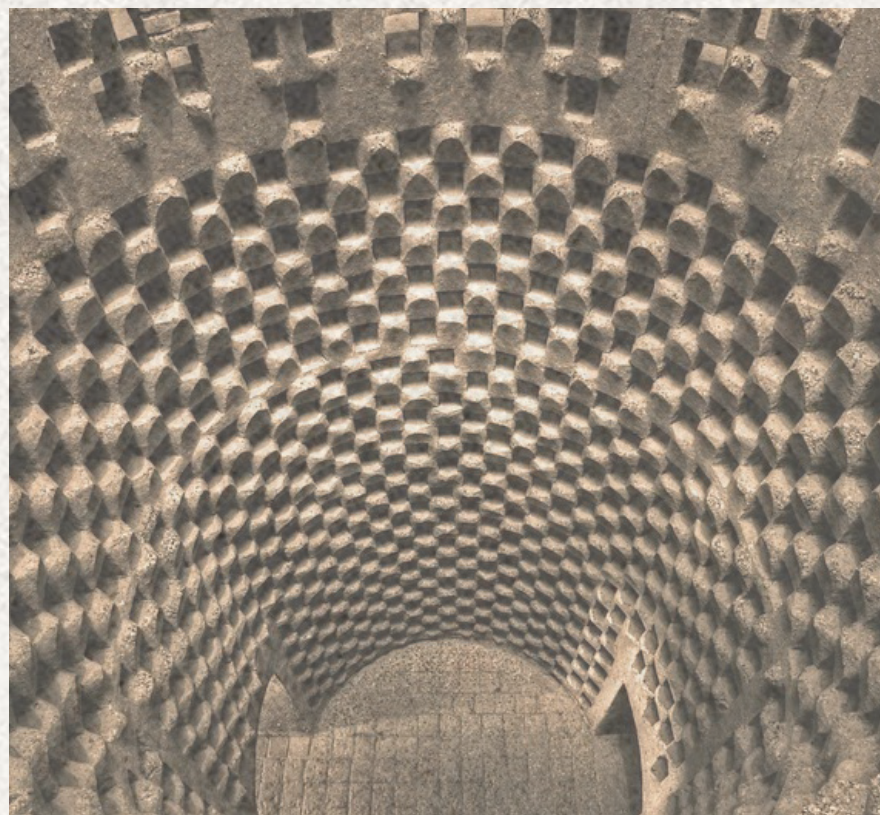
Pigeon towers are unique icons and beautifully shaped, made with all natural materials and a design that allows fresh air to blow through.

Across the region, farmers diversified their crops by constructing these pigeon towers that act as fertiliser factories.

The beauty of the structure comes mainly from solids and voids; allowing for the pigeons to pass by, rest and inhabit the structure during different activities.

The pigeon towers are widely known to be made out of “Olla” and assembled with a very meticulous arrangement to ensure stability and ventilation.

Pigeon houses are huge landmarks in Sohag and reflects on the local identity.





Translating the solids and voids abstracted from the pigeon tower ergonomics and creating subtle, homogeneous and simple modern products that honour the local artisans work.

-THE DRESSER-

Through studying the pigeons tower’s structure, we were able to showcase the complexoity of the solids and voids, combine circular elements derived from the inspiration and creating a unique dresser unit that is both functional and aesthetic.

The engravements add alot of charac-ter to the piece as well as the continous lines varying from curvilinear to rectilinear.

Our dresser is versatile in function as it has drawers, hinged doors and well as flexible spaces inbetween. The user is to enjoy a modern piece with alot of heritage and a strong storyline.

- Dimesions -

Width: 140.0 cm
Depth: 50.0 cm
Height: 90.0 cm

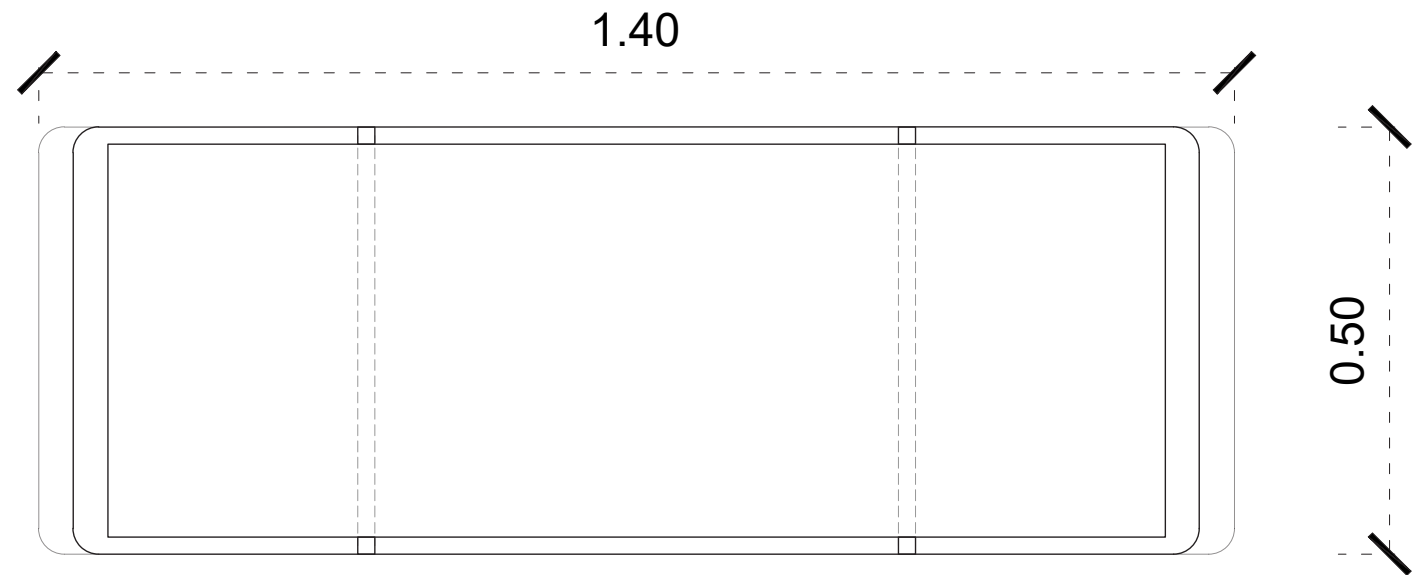
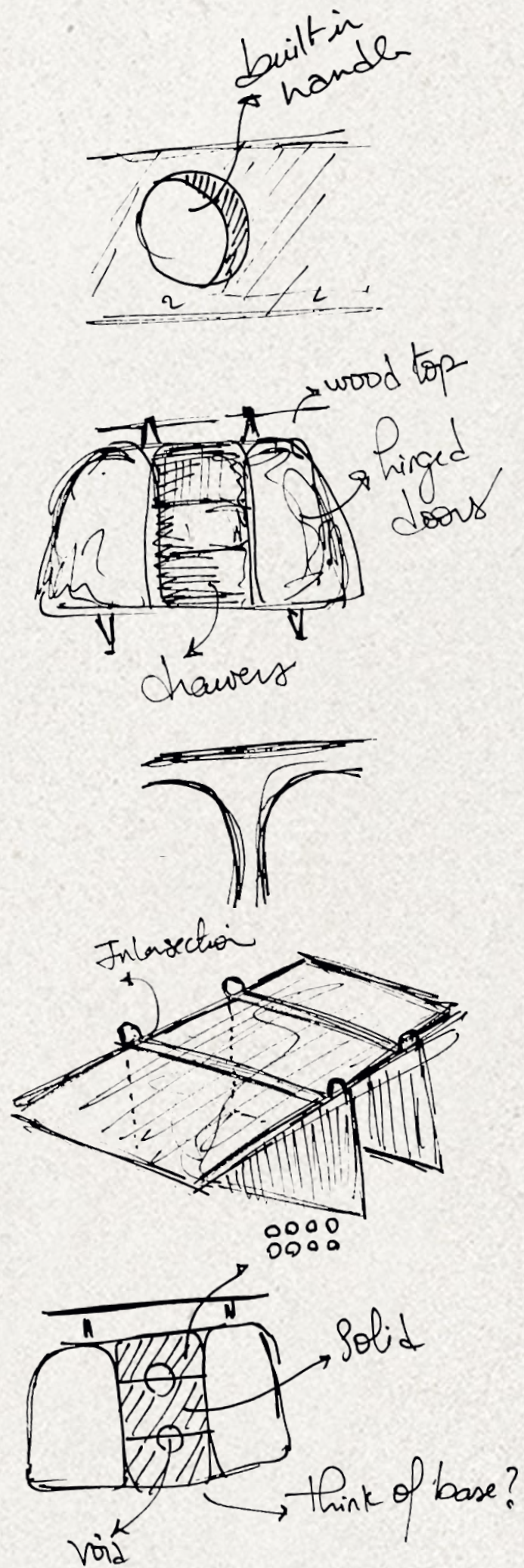
- Suggested material -

Base; Oak wood finished with ester paint.
Doors; Oak wood (carved)
Interior divisions: Blockboard wood finished with glossy doco pop colored paint.

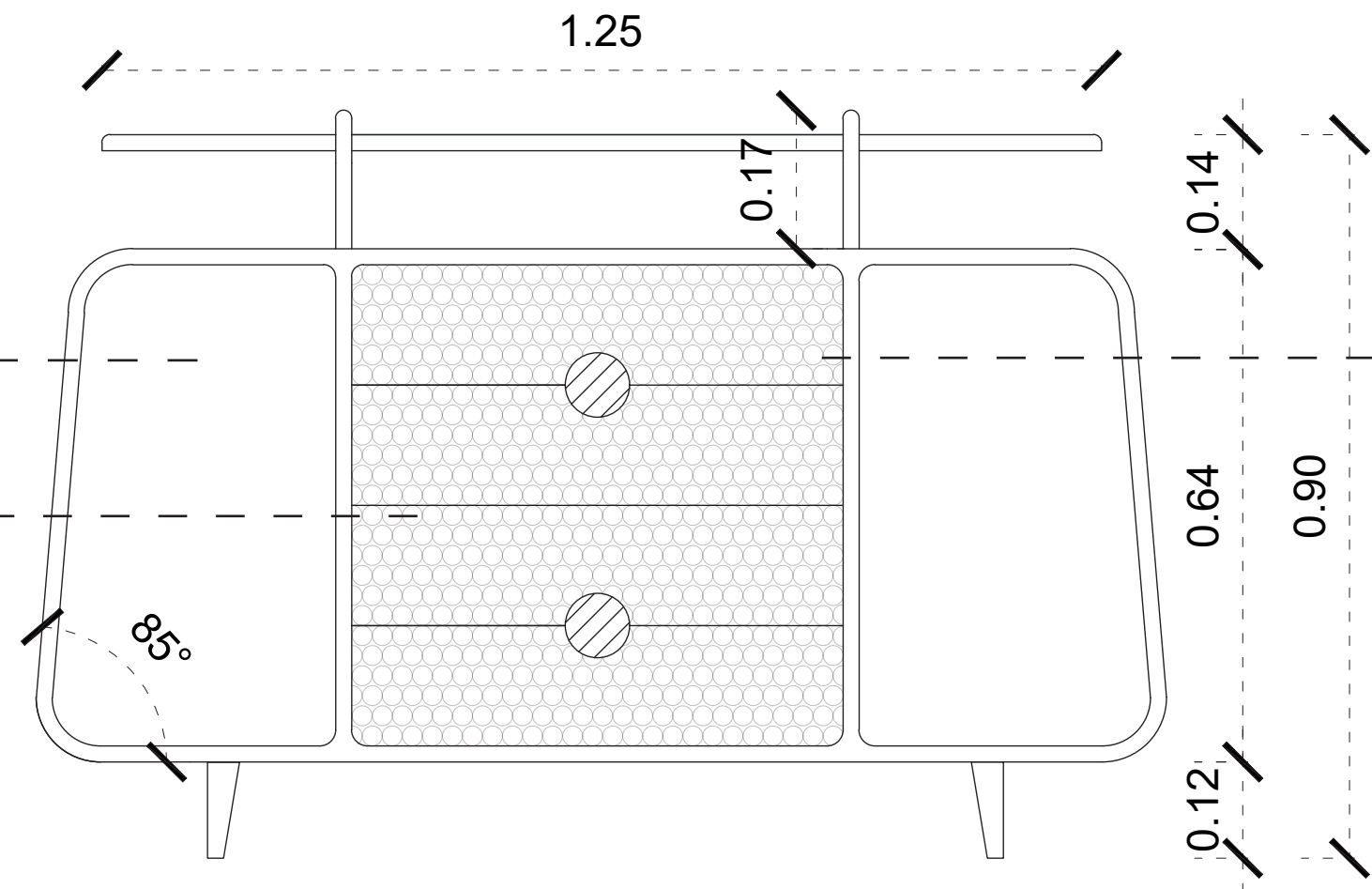
- Product Variation -

Product can also be executed in ...
* Walnut veneer finish.
* Round Gold external handles.
* Ready made wood Panels of carved/ striped wood.





Plan



Elevation

- T H E C O M M O D E -

Intertwining geometries inspired from the pigeons tower which allow flow, vision and flexibility.

This has been translated subtly into our piece. The non-symmetry in the form reciprocates how a man made structure - the pigeons house - show-cases alot of beauty through its irregularity.

The commode is a minimal, bold and complementing addition to every modern home with a striking sense of authenticity.

- Dimesions -

Width: 50.0 cm
Depth: 42.0 cm
Height: 50.0 cm

- Suggested material -

Base; Massive Oak wood finished with ester paint

Top: Blockboard wood with Oak veneer, finished with ester paints.

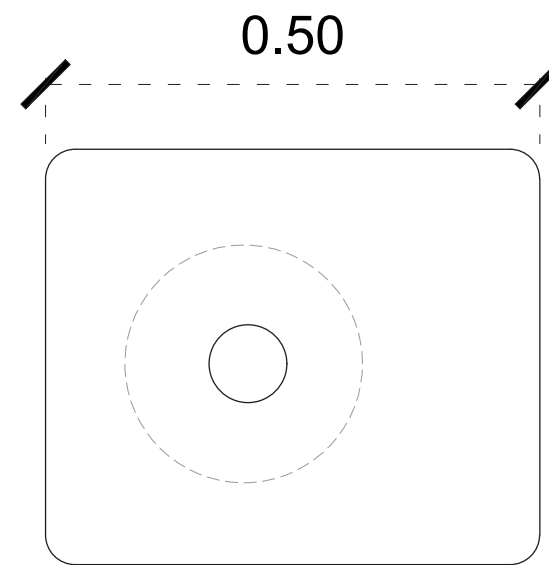
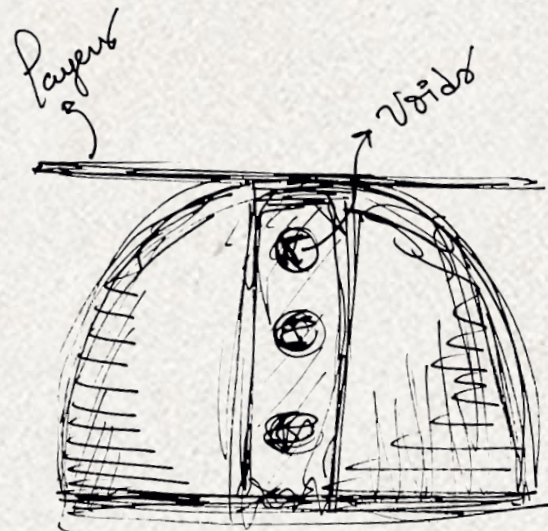
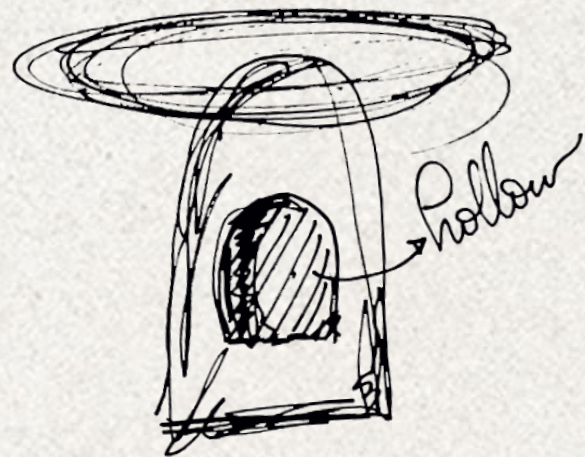
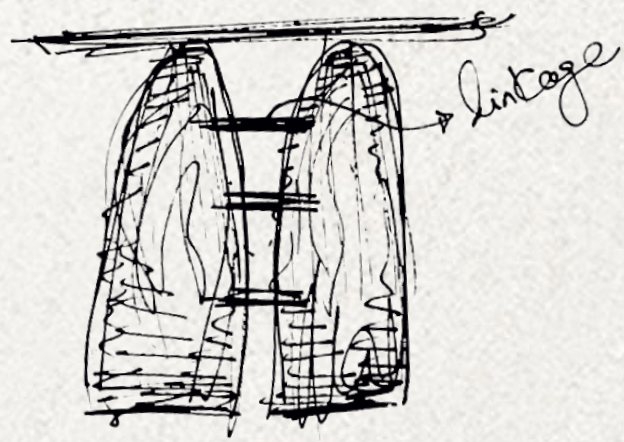
- Product Variation -

Product can also be executed in ...

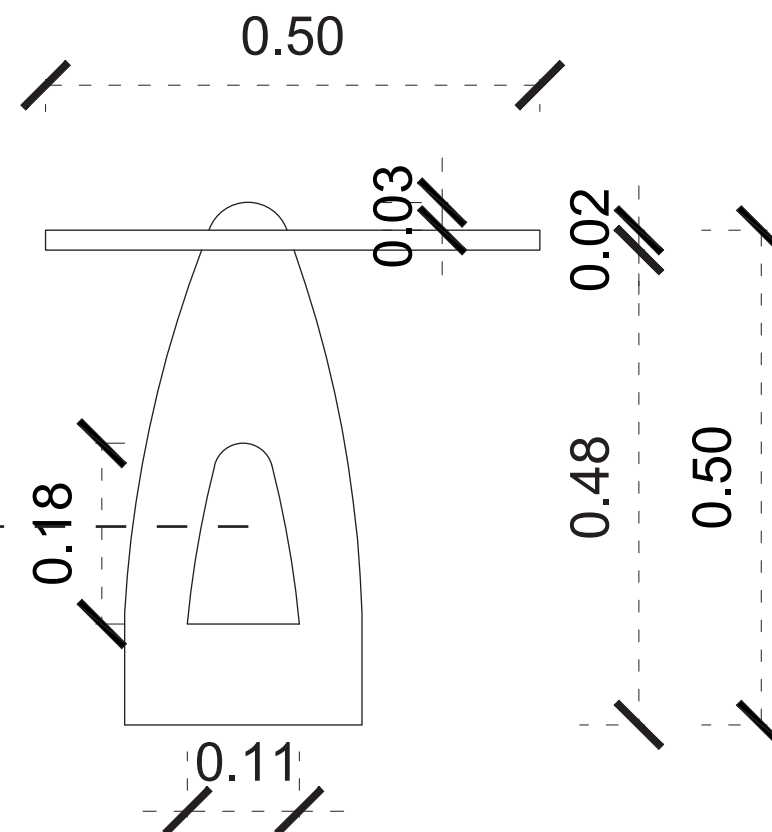
* Red beech wood base.

* Wooden top could be made from MDF





Plan



Elevation

Inner void for storage

- T H E W A R D R O B E D O O R I -

A pigeons tower is created through layers; the more you go, the more you see and the more you can really appreciate the form.

Throught layering, we were able to create depth, increase functionality and elevate the look by a minimal and simple concept.

This design is modular and dynamic; with each change in composition, you invision a new story.

- Dimesions -

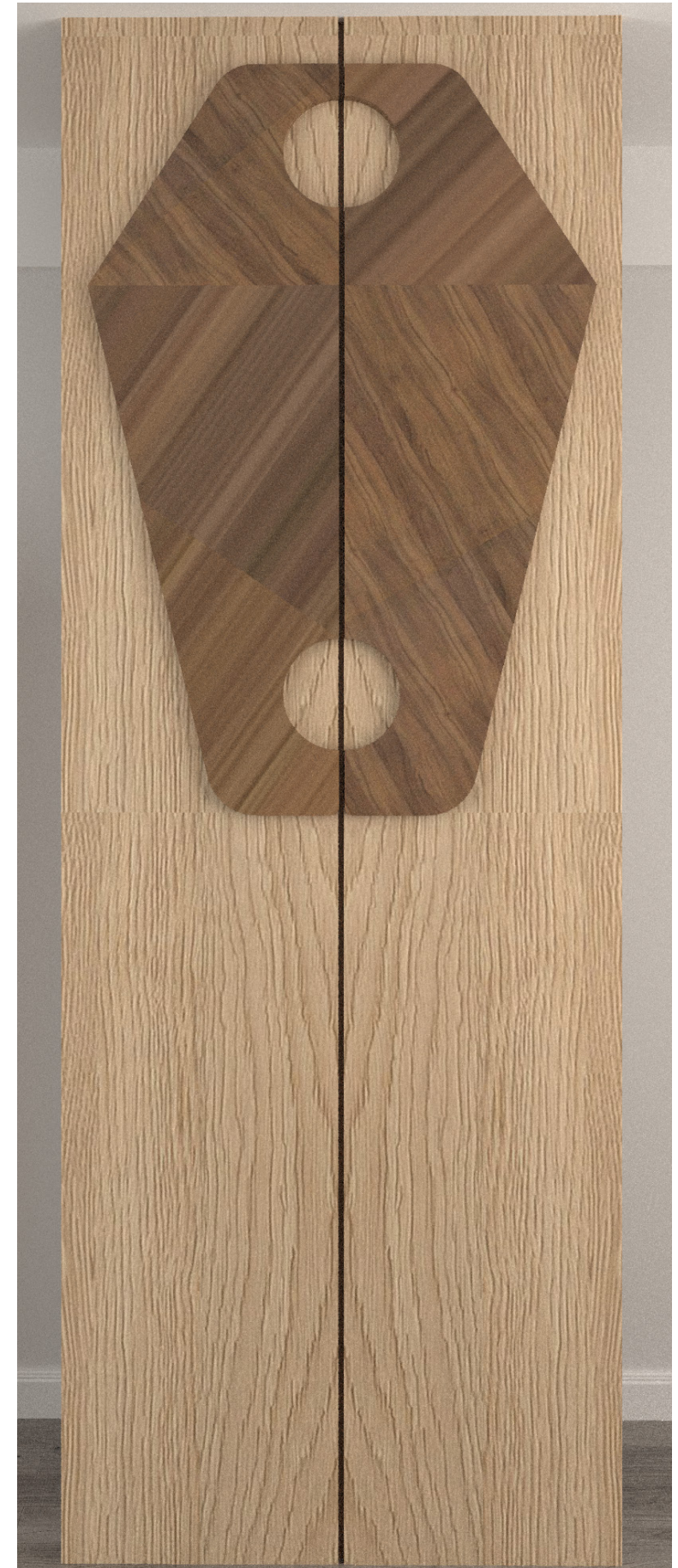
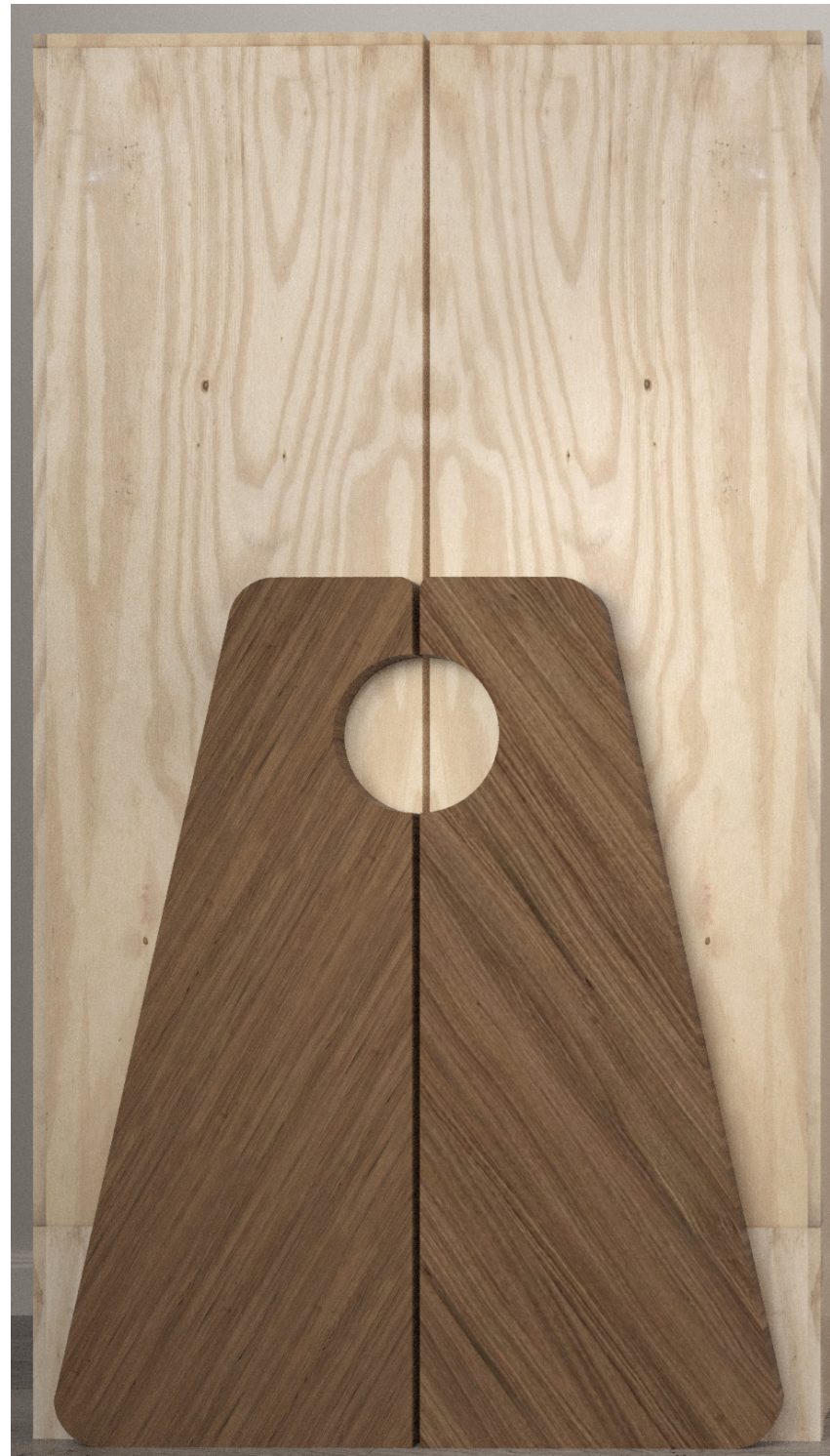
Width: 50.0 cm
Thickness: 4.0 cm
Height: 140.0 cm

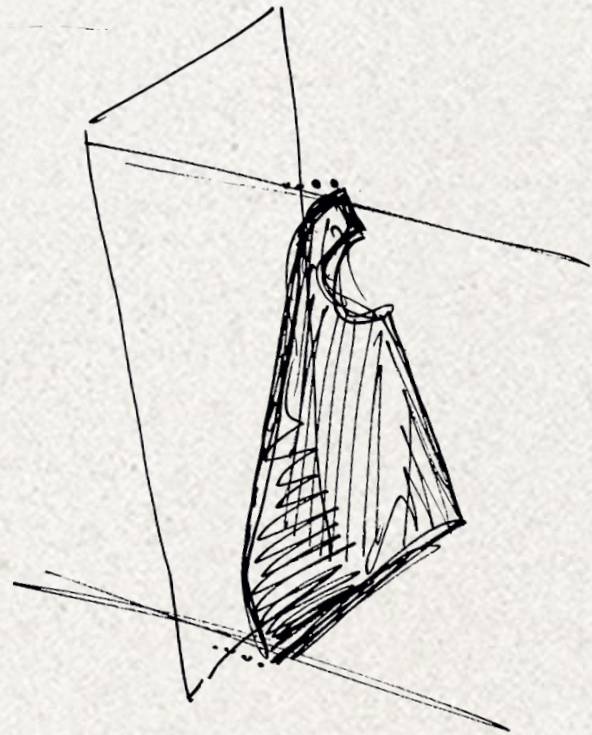
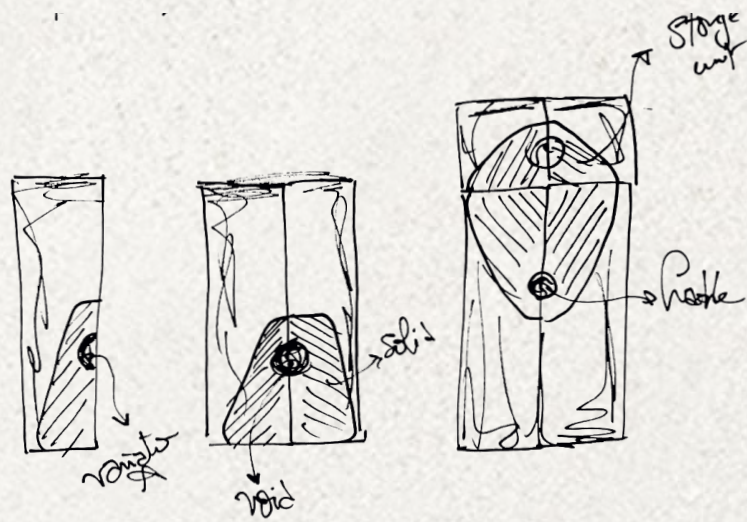
- Suggested material -

Doors; Blockboard wood with Oak veneer and finished with ester paint.

- Product Variation -

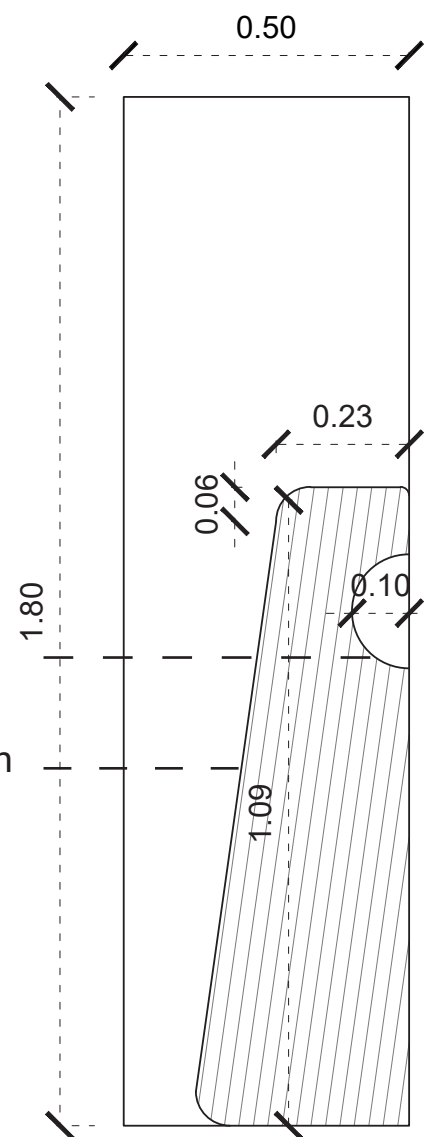
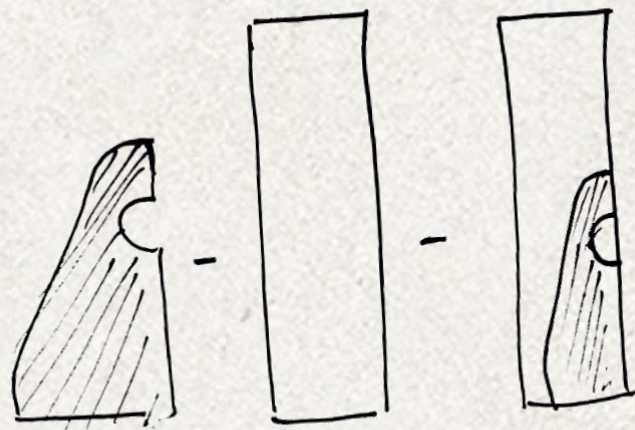
Product can also be executed in ...
* MDF boards
* Round Gold external handles.



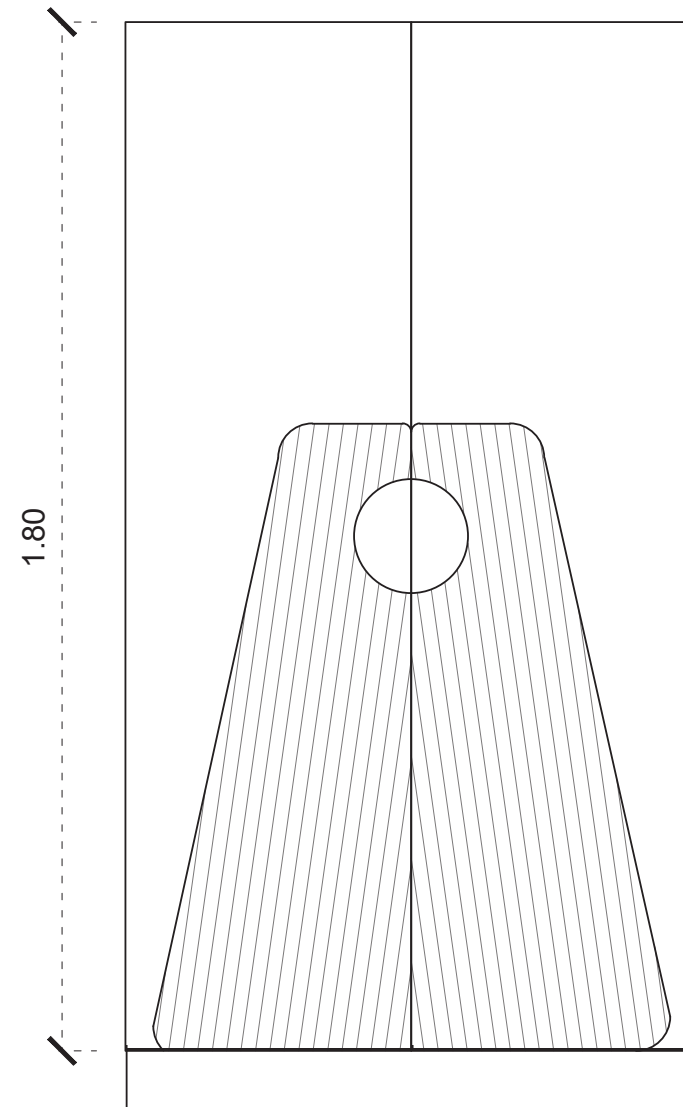


Void creates built in handle.

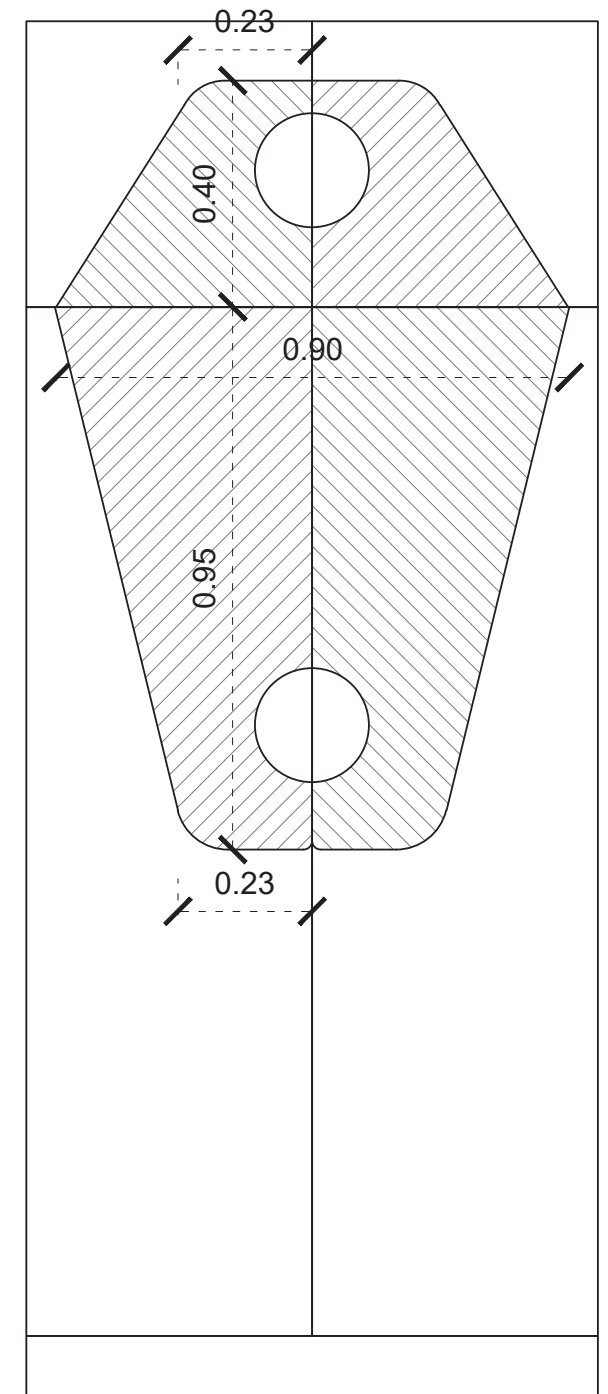
Veneer direction parallel to the angle



Single Door



Double Door



Wardrobe with upper storage

- T H E WARDROBE DOOR II

Creating a bold wardrobe door design that complements the whole collection.

Playing along with solids and voids to create a modern, versatile wardrobe design that is adaptable and timeless.

This design is modular and dynamic; with each change in composition, you invision a new story.

- Dimesions -

Width: 50.0 cm
Thickness: 4.0 cm
Height: 140.0 cm

- Suggested material -

Doors; Hand carved oak wood to be fixed on Blockboard wooden doors with oak veneer & finished with ester paint.

- Product Variation -

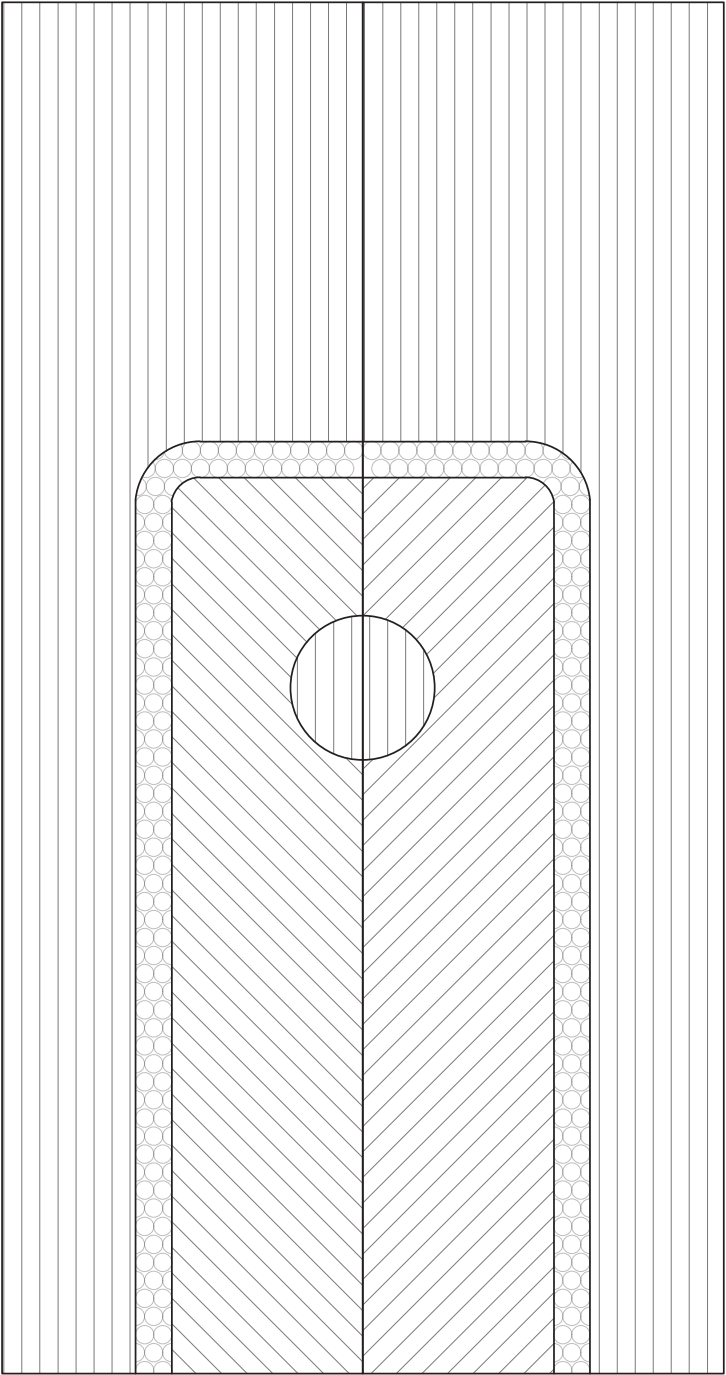
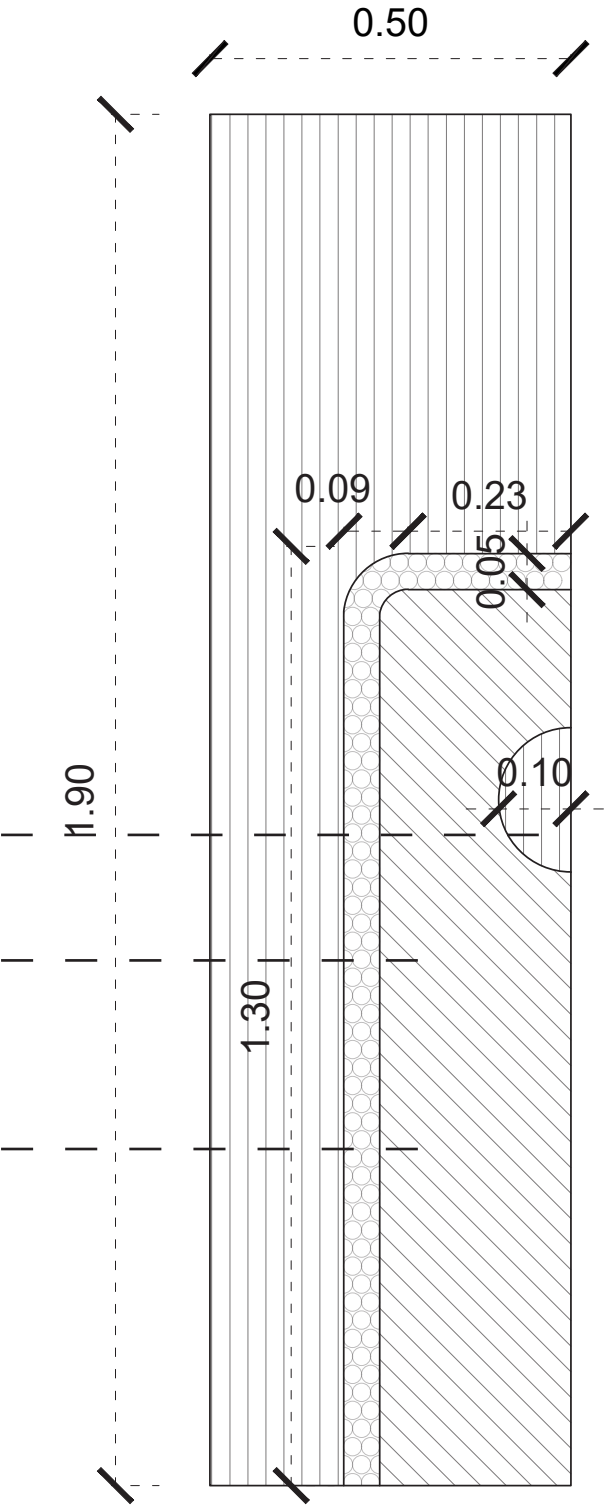
Product can also be executed in ...
* Ready made panels on MDF boards.
* Round Gold external handles.



Void creates
built in handle.

Veneer direction
parallel to the angle

Handcarved oak
wooden frame.





Salma Abbas Abdat, 25

An architect, Graphic designer & currently working as a FF&E specialist. My interest towards product design is getting bigger through the years & recently working on my line of home products in “dot the concept”.

I love experimenting with colours & designs through creating visuals having social purposes.



RADWA KHALIL, 25

An architect, a visionary and a dreamer. I pursued my furniture making career right after graduating from the GUC. I enjoy experimenting with materials, playing around with dimensions, scales and lines on my computer and watch it come to life!

I also love cooking, dressing up and socialising.





شکر