



# HYLON

means proud as we should be proud  
of our heritage and history

# contents

---

01

Concept

02

Moodboard

03

Final Pieces

04

Workshop  
drawings

05

Meet Us

# Concept



Inspired from the Karnak temple, the forms of the furniture pieces are divided to 3 smaller forms on three different levels with inclination in some of its details to resemble the pylon three layers and the inclination of its side edges. Moreover, the designs have three bars holding the top part which mimic the hypostyle hall with its columns holding the ceiling and they're three bars because number three is considered a sacred number in the religion of Ancient Egyptians. The designs are smooth and look like one folded piece of paper to mimic the papyrus.



# Moodboard

---

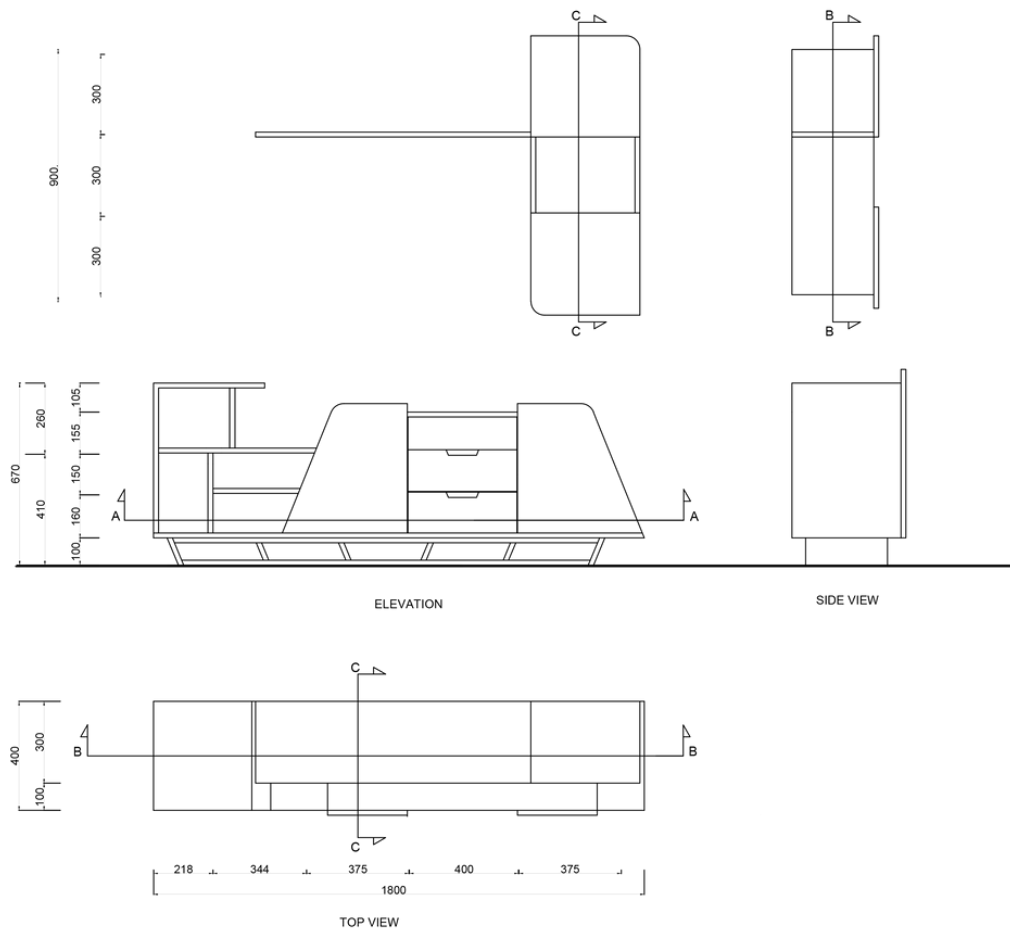


# Final Pieces

“

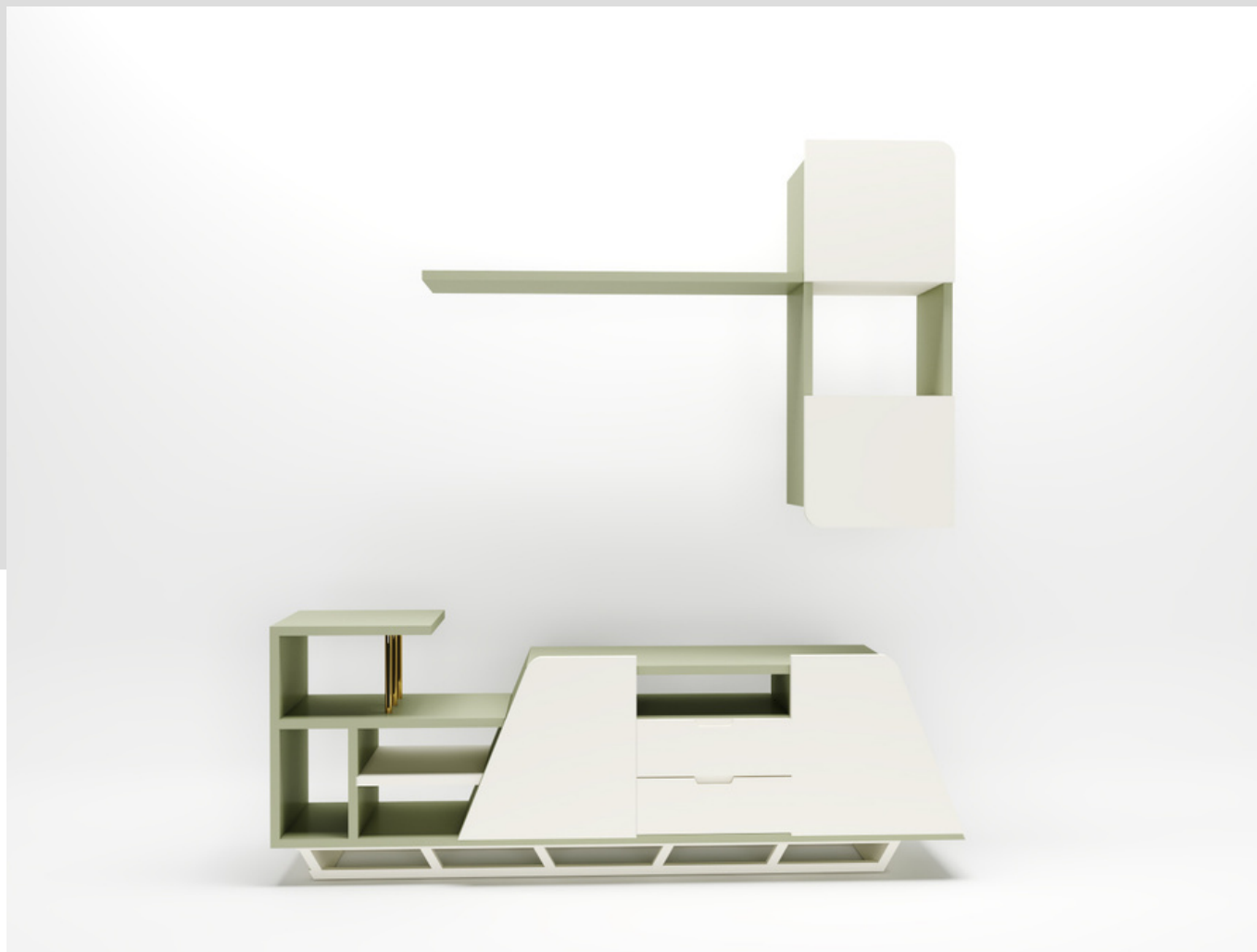
## TV UNIT

with dimensions **length of 1800 mm, depth of 400 mm and height of 670 mm**. It is made with MDF of 18 mm. The piece is connected with dowels. The whole unit is painted with Nitro Cellulose Lacquer paint with the color **RAL 6021 (Green)** and **RAL 9010 (Latte)**. There are proper joints were added to the sliding drawers and doors' hinges, everything will be finished according to the origins of workmanship.



# Final Pieces

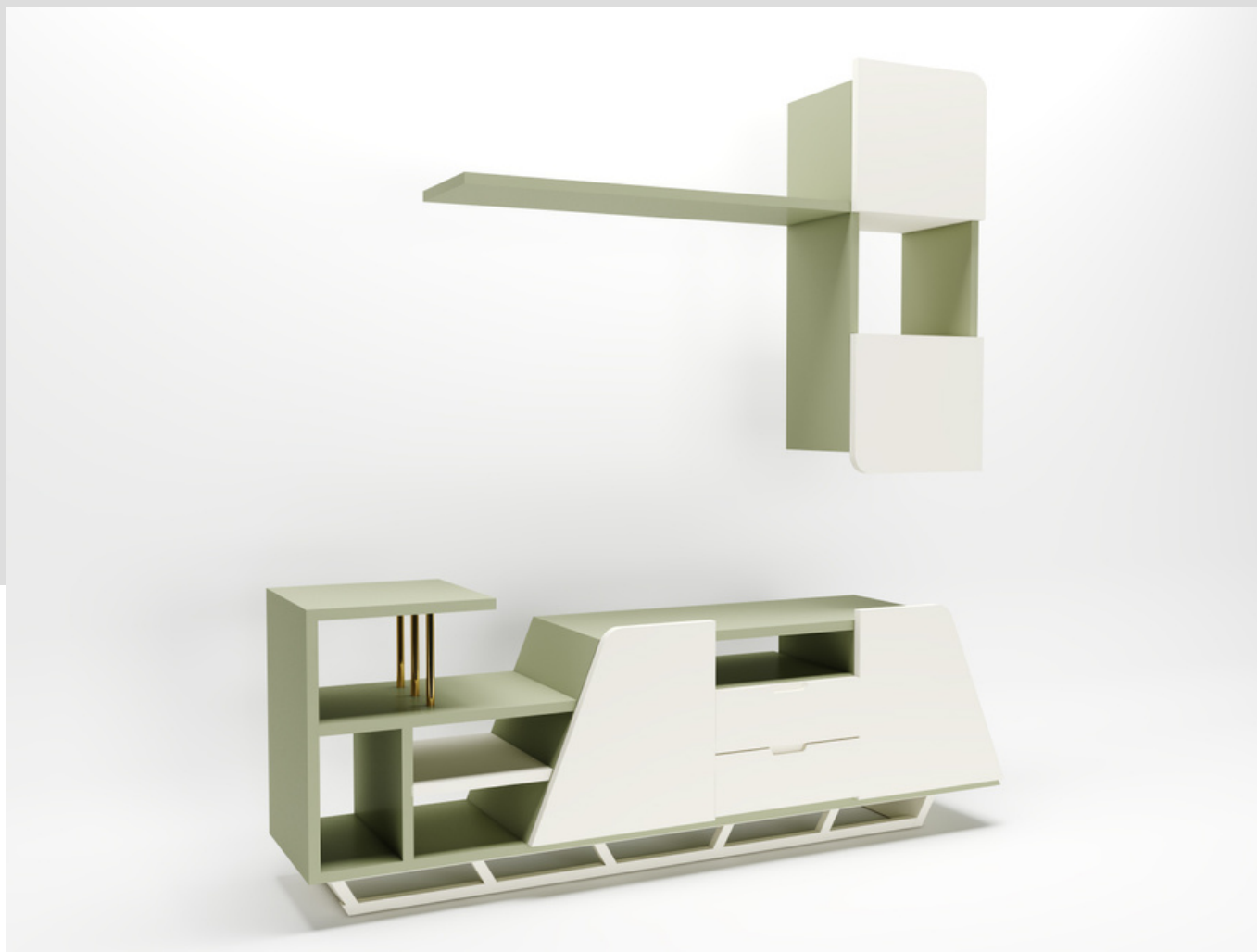
---



RAL 6021 (Green) and RAL 9010 (Latte)

# Final Pieces

---



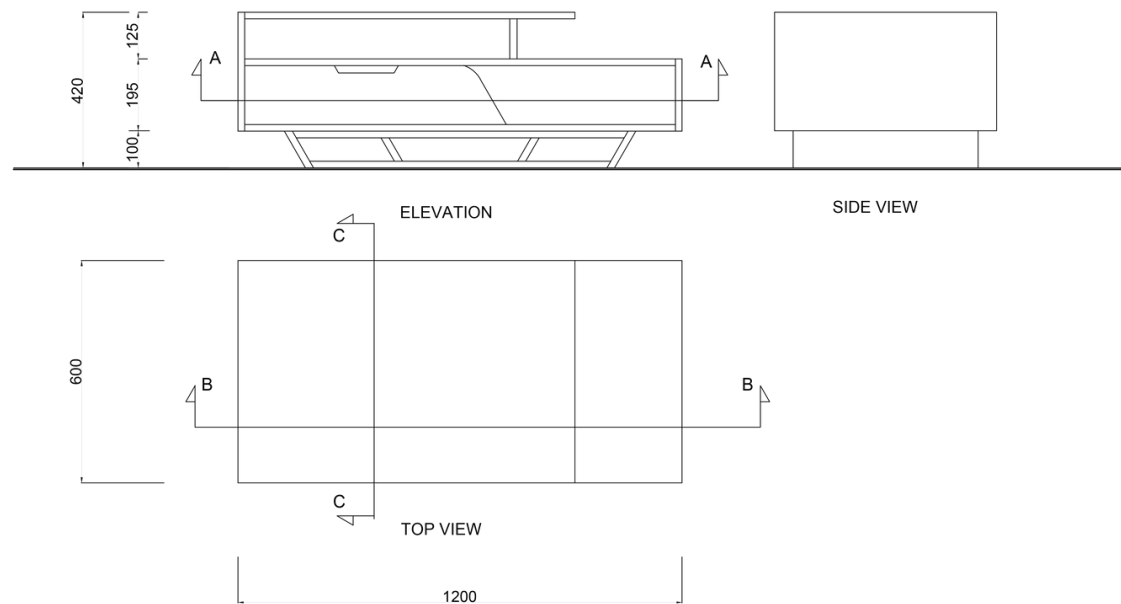
RAL 6021 (Green) and RAL 9010 (Latte)

# Final Pieces

“

## MIDDLE TABLE

with dimensions **length of 1200 mm**, **depth of 600 mm** and **height of 420 mm**. It is made with MDF of 18 mm. The piece is connected with dowels. The whole unit is painted with Nitro Cellulose Lacquer paint with the color **RAL 6021 (Green)** and **RAL 9010 (Latte)**. There are proper joints were added to the sliding drawers and doors' hinges, everything will be finished according to the origins of workmanship.





# Final Pieces

---



RAL 6021 (Green) and RAL 9010 (Latte)

# Final Pieces

---



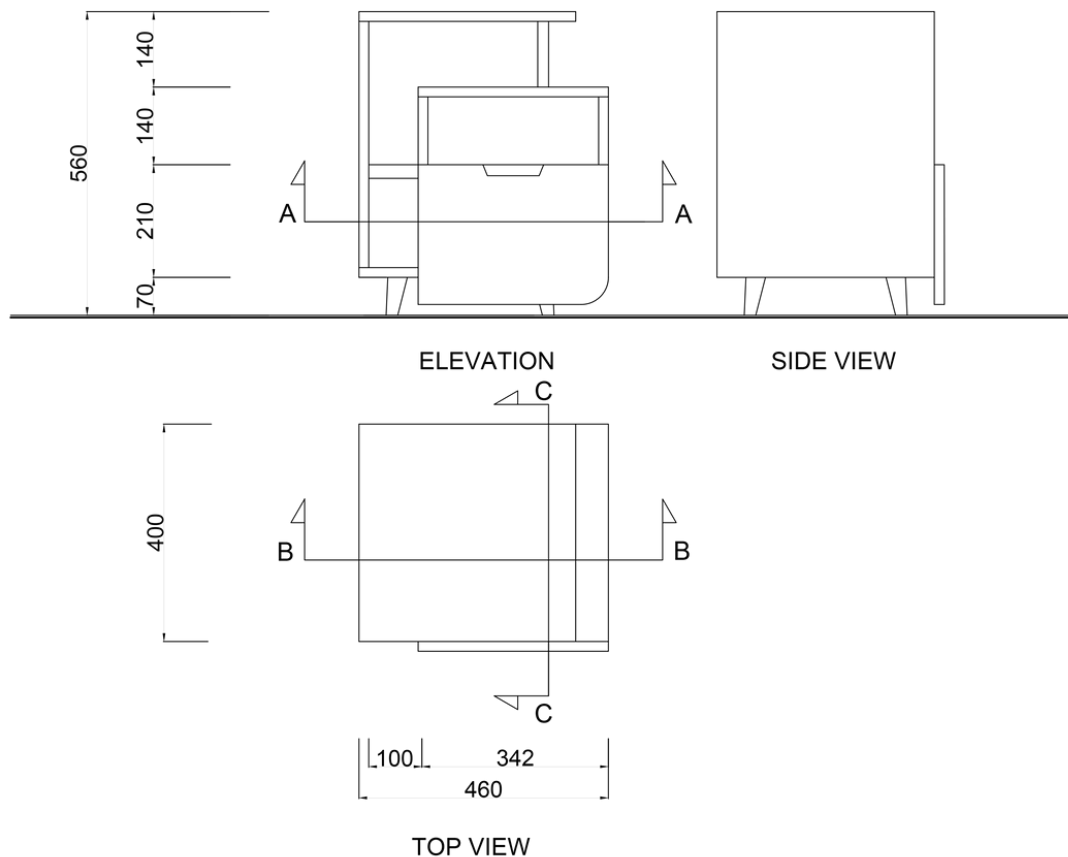
RAL 6021 (Green) and RAL 9010 (Latte)

# Final Pieces

“

## SIDE TABLE

with dimensions length of 460 mm, depth of 400 mm and height of 560 mm. It is made with MDF of 18 mm. The piece is connected with dowels. The whole unit is painted with Nitro Cellulose Lacquer paint with the color RAL 6021 (Green) and RAL 9010 (Latte). There are proper joints were added to the sliding drawers and doors' hinges, everything will be finished according to the origins of workmanship.



# Final Pieces

---



RAL 6021 (Green) and RAL 9010 (Latte)

# Final Pieces

---



RAL 6021 (Green) and RAL 9010 (Latte)

# 3D Scenes

---



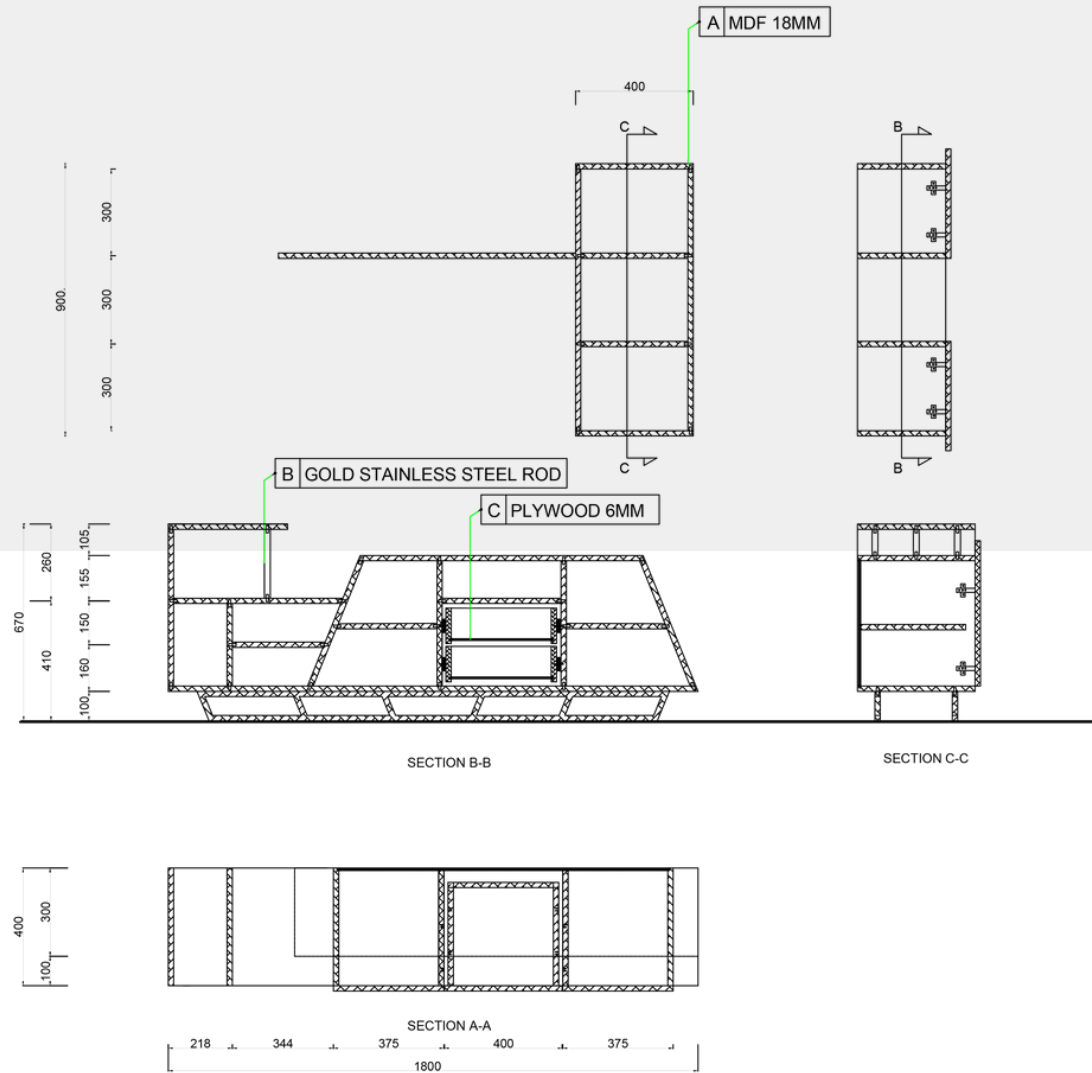
# 3D Scenes

---





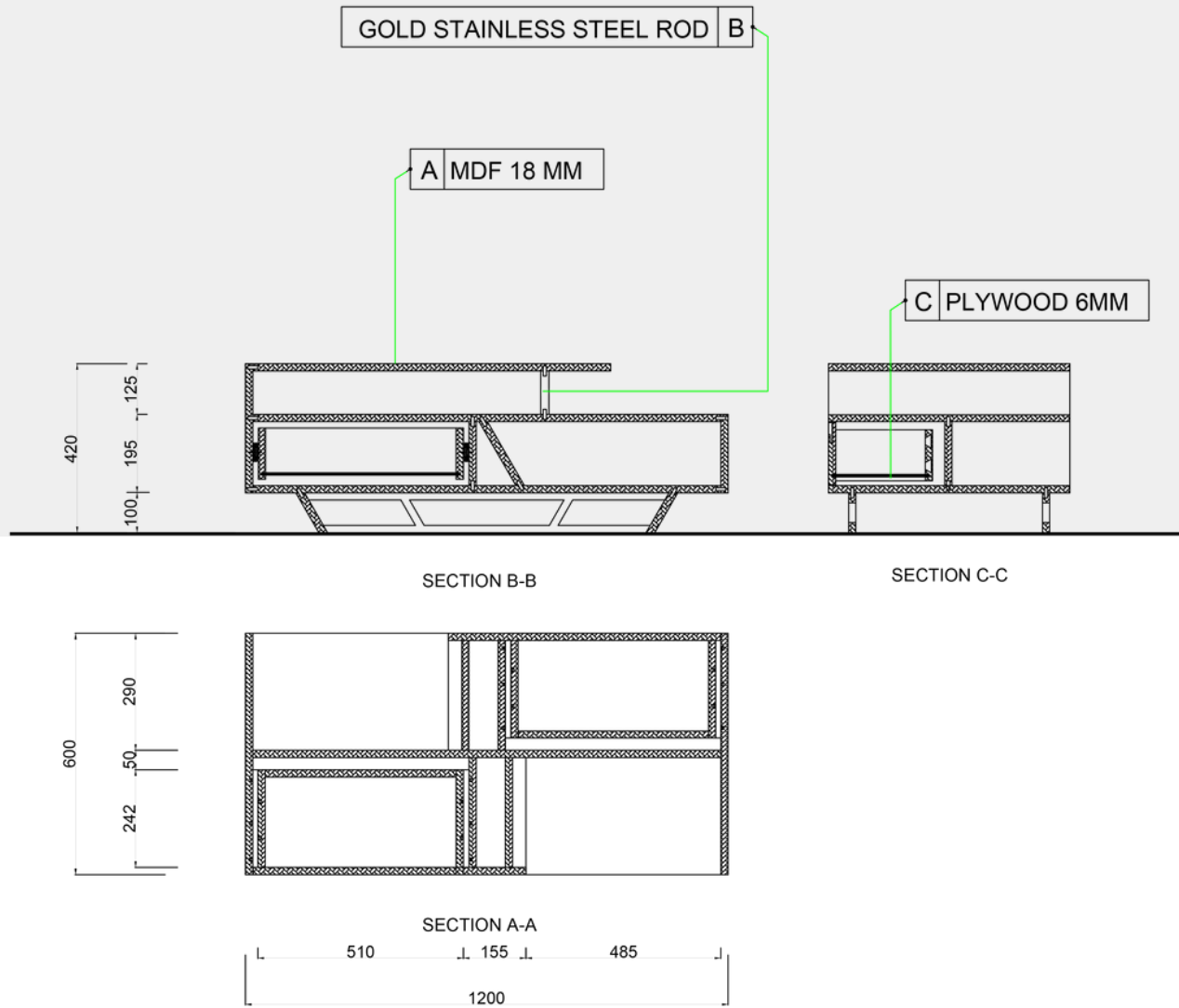
# Technical Drawing



TV Unit

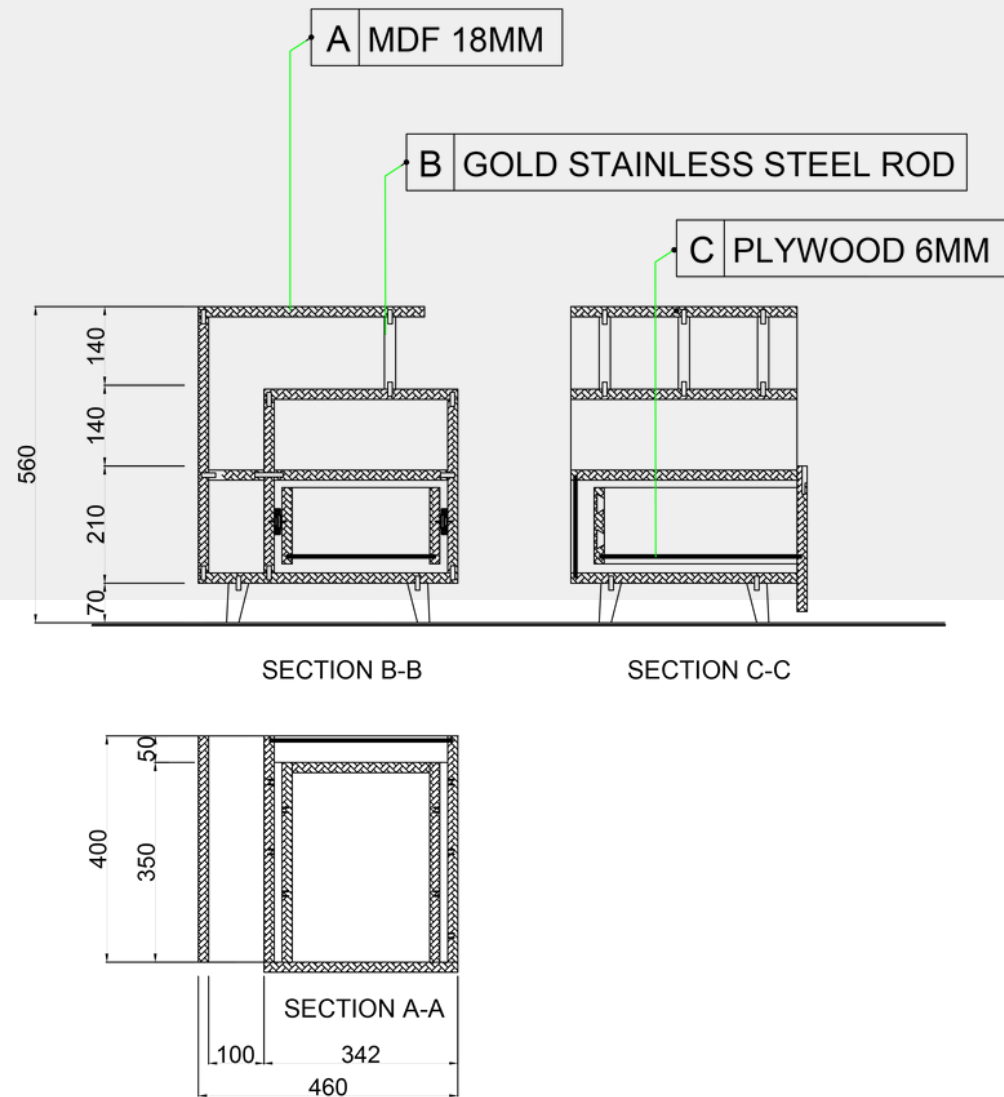


# Technical Drawing



Middle Table

# Technical Drawing



Side Table

# Meet Us

---



Login Ashraf



Hagar Mohamed